



# AEP Systems

Federal PKI Technical Working Group  
June 2003

# Company Background

---

- **Founded: 1998**
- **Employees: 62**
- **The marriage of two companies:**
  - Baltimore Technologies Hardware Group (Zergo) (Security)
  - AEP Systems (SSL Acceleration)
- **Headquarters: Dublin, Ireland. US Headquarters: Boston, MA**
- **Sensitive Crypto Products Developed in the UK at a government cleared secure facility**
- **Regional Offices: Hong Kong, Palo Alto & UK**
- **Core Intellectual Property: Evolved from experience in cryptographic accelerator and hardware security technology**

# Mission Statement

---

**To deliver hardware security and acceleration solutions that are fast and cost-effective to deploy**

# AEP SureWare Range PK Enabling Products

---

- **AEP SureWare Keyper**

Hardware security modules that offer security and performance for protected key storage, high-speed signature and hardware key generation



- **AEP SureWare A-Gate: AG-50**

SSL VPN hardware appliances that provide secure and authenticated access from any Internet browser to internal applications



- **AEP SureWare Net: Net ED20M, Net EC20M**

High security VPN encryptors that protect IP traffic across WAN & LAN networks



- **AEP SureWare Runner: Runner 1000 / 2000 / S1000**

Acceleration hardware that off-loads compute-intensive cryptographic functions from a server



# Customers

---



# AEP-SureWare Keyper

---

- **AEP-SureWare Keyper Professional**

- Network attached
- FIPS 140-1 level 4
- ITSEC E3
- PKI applications such as Baltimore UniCERT, MS Certification Services, ValiCERT OCSP, Kyperpass OCSP, Netscape CA, RSA CA
- General crypto applications via industry standard PKCS#11, MS CSP or JCE (Java) interfaces

- **AEP-SureWare Keyper PCI**

- PCI card
- FIPS 140-1 level 3
- PCI variant of Professional
- PCI card removal detection

# AEP-SureWare Certification / Tamper Detection

---

- **FIPS 140-1 L4**

- Mesh: penetration attack
- Power detection
- Temperature outside 0 to 45 degrees C

- **FIPS 140-1 L3**

- No mesh: potted or enclosure removal detection
- Power detection
- Temperature outside 0 to 45 degrees C

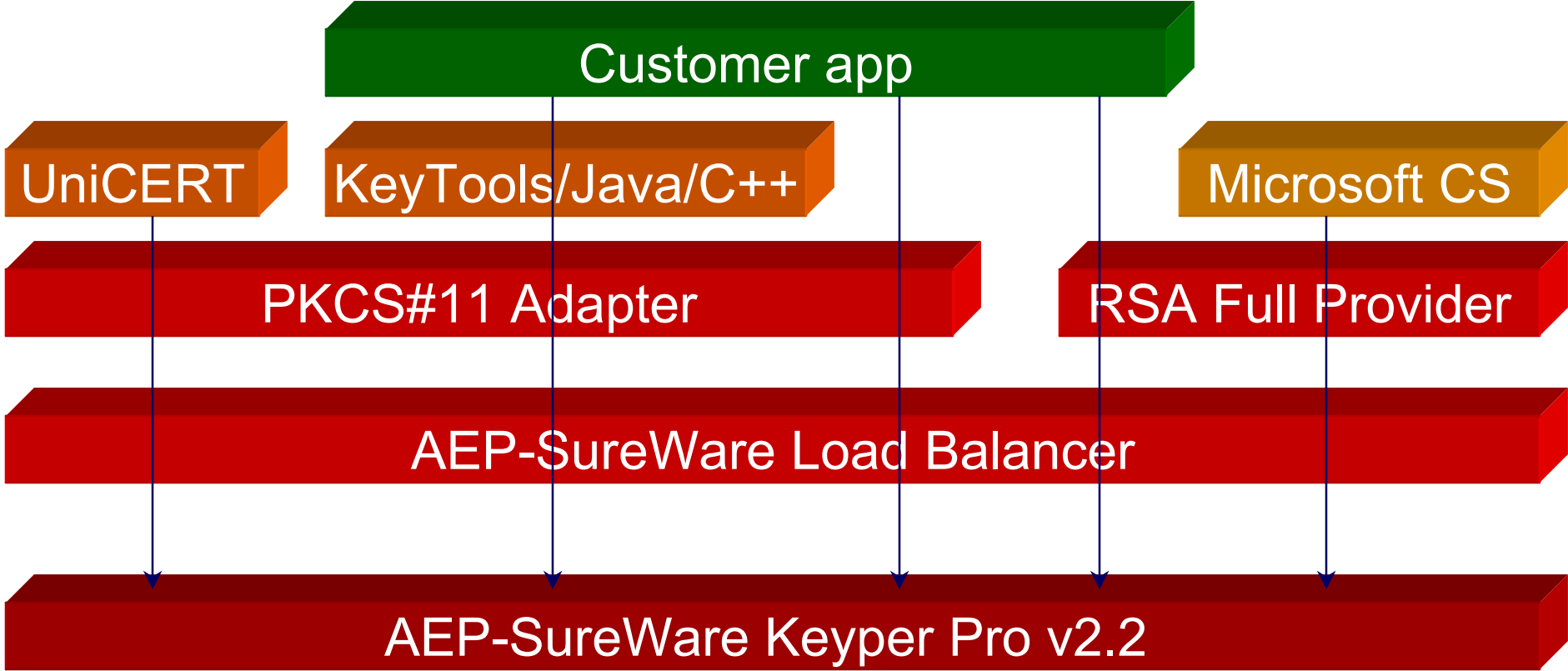
# AEP-SureWare Keyper Features

---

- **Standard crypto facilities**
  - Sign/verify
  - Key wrap/unwrap (can be securely switched on/off)
  - Bulk encrypt/decrypt/MAC/verify
  - 512 to 2048 bit RSA, 56 to 168 bit DES, DSA, DH
  - Key policy determines key use
  - Hardware random number generator – full entropy
  - SHA-1/MD-5
- **Key Store**
  - 500 2048 bit or 1,000 1024 bit RSA keys
- **Performance**
  - 150 1024 bit RSA signs/sec
- **Authorized key backup/restore**
- **Security Officer ‘user’ groups**
- **Up to 16 balanced by load**
- **Fault tolerant/peak load/scaleable (with AEP-SureWare Load Balancer)**
- **Secure firmware update**



# AEP-SureWare Keyper Professional Application Support

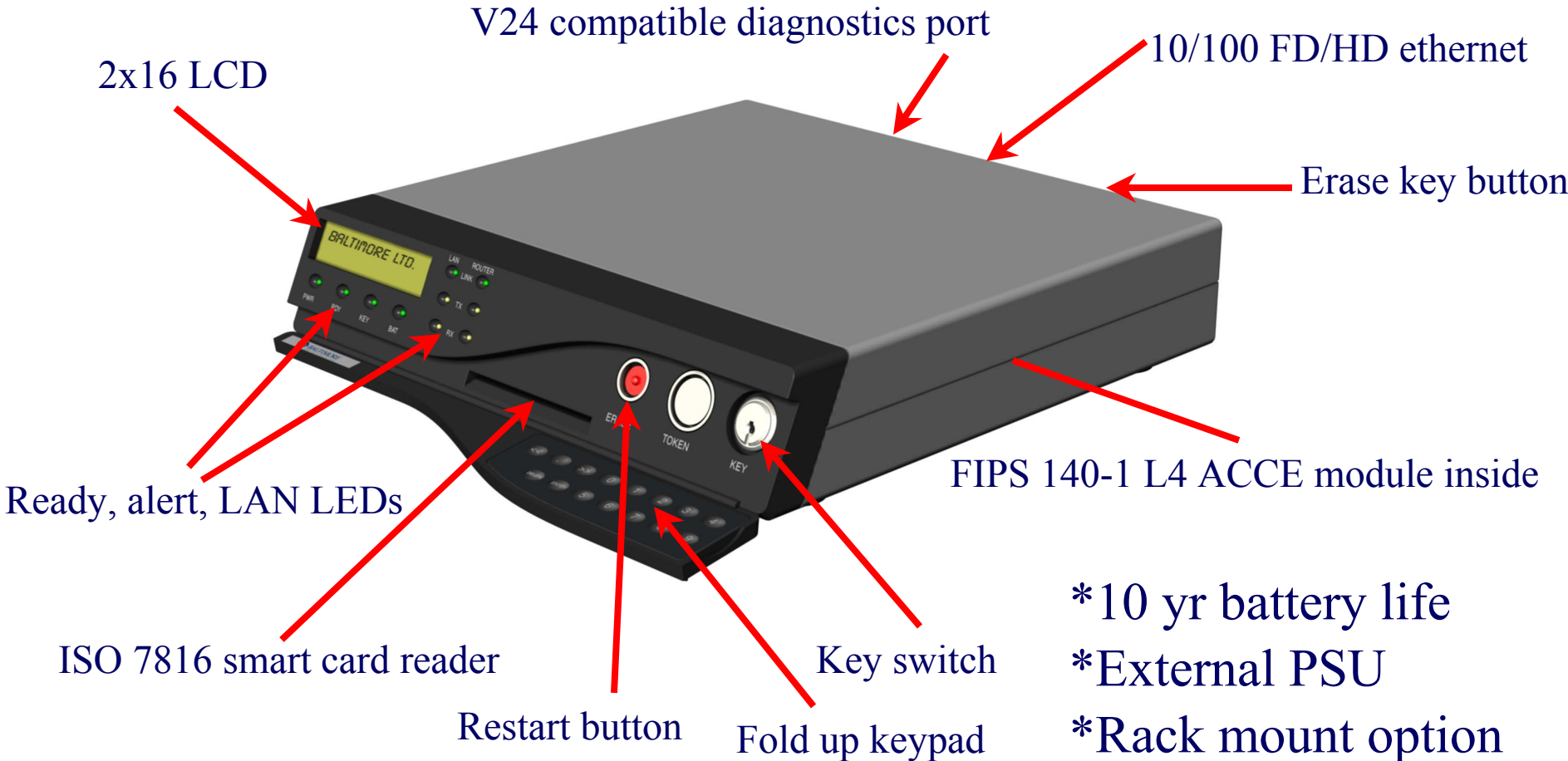


# AEP-SureWare Keyper Professional Platforms

---

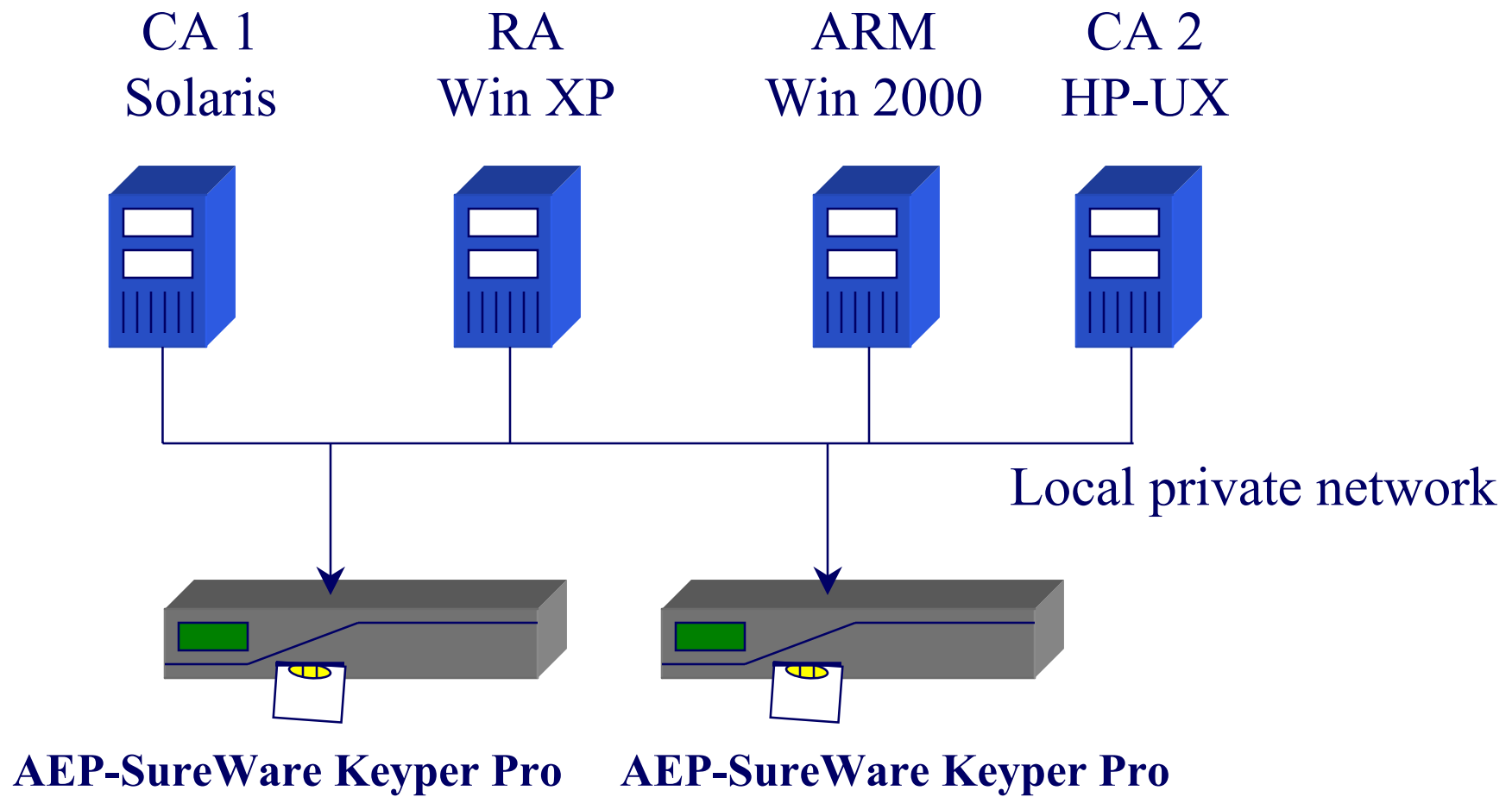
- **Sun Solaris (on SPARC)**
  - v2.6 (32 bit)
  - V2.7 (unofficial, customers do use with this successfully)
  - v8 (32 and 64 bit)
  - V9 (planned)
- **Hewlett-Packard (on PA-RISC)**
  - HP-UX v11 (32 and 64 bit)
- **Microsoft Windows (on Intel)**
  - NT4 (On Intel)
  - 2000
  - XP Pro (32 bit)
  - .Net Server (32 bit)
- **Java**
  - Solaris (32 bit) & Windows (32 bit) with Baltimore's KeyTools product

# AEP-SureWare Keyper Professional Hardware



- \*10 yr battery life
- \*External PSU
- \*Rack mount option

# AEP-SureWare Keyper Professional Deployment

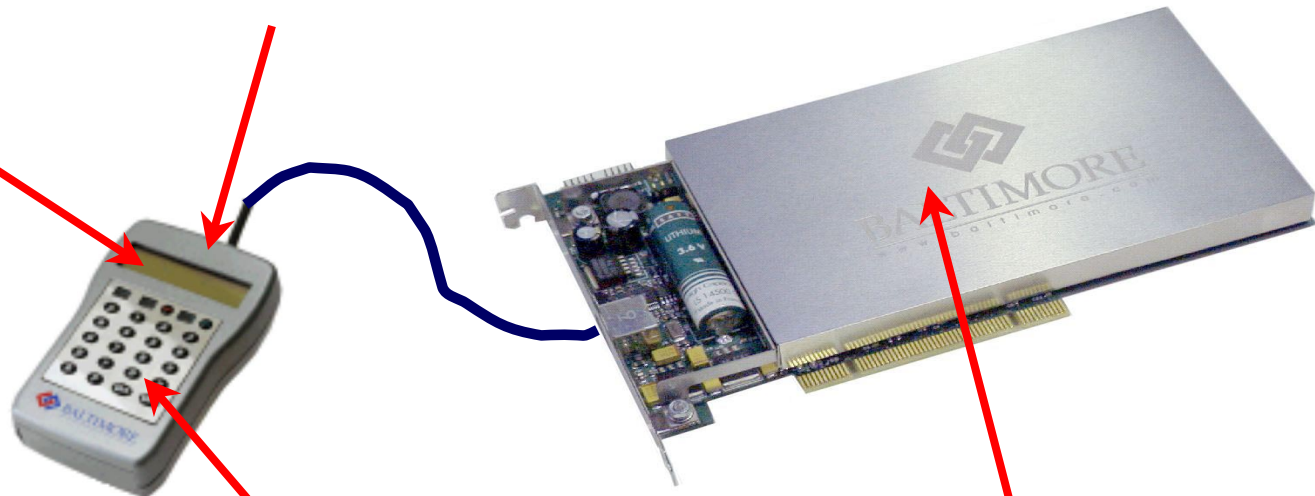


# AEP-SureWare Keyper PCI

---

2x16 LCD

ISO 7816 smart card reader



Keypad

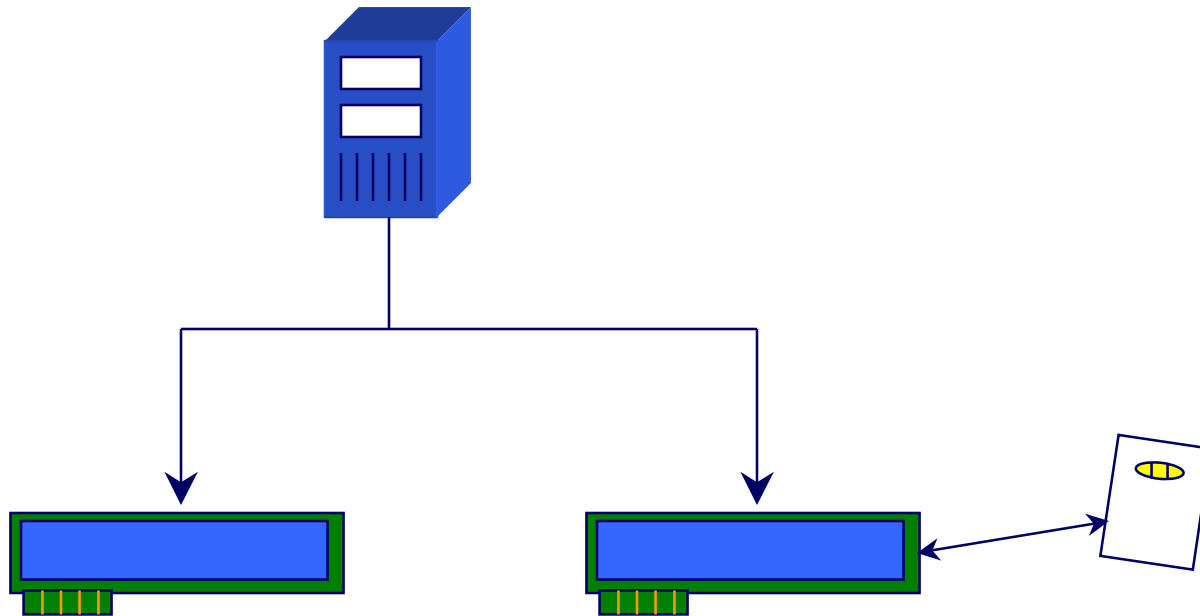
FIPS 140-1 L3 ACCE module

\*10 yr battery life

# AEP-SureWare Keyper PCI Deployment

---

Application



**AEP-SureWare Keyper PCI**

**AEP-SureWare Keyper PCI**

# Why AEP SureWare Keyper?

---

- **The only FIPS 140-1 Level 4 HSM**
- **Proven track record with over 1,000 network installations**
- **Support for industry leading applications**
- **Support for Solaris & Windows, PKCS#11, MicroSoft CAPI, and Java JCE**
- **Secure key storage, back-up, and recovery**
- **Hot removal, scalable up to 16 boxes**
- **Fault tolerant and load balancing**

# AEP SureWare Net

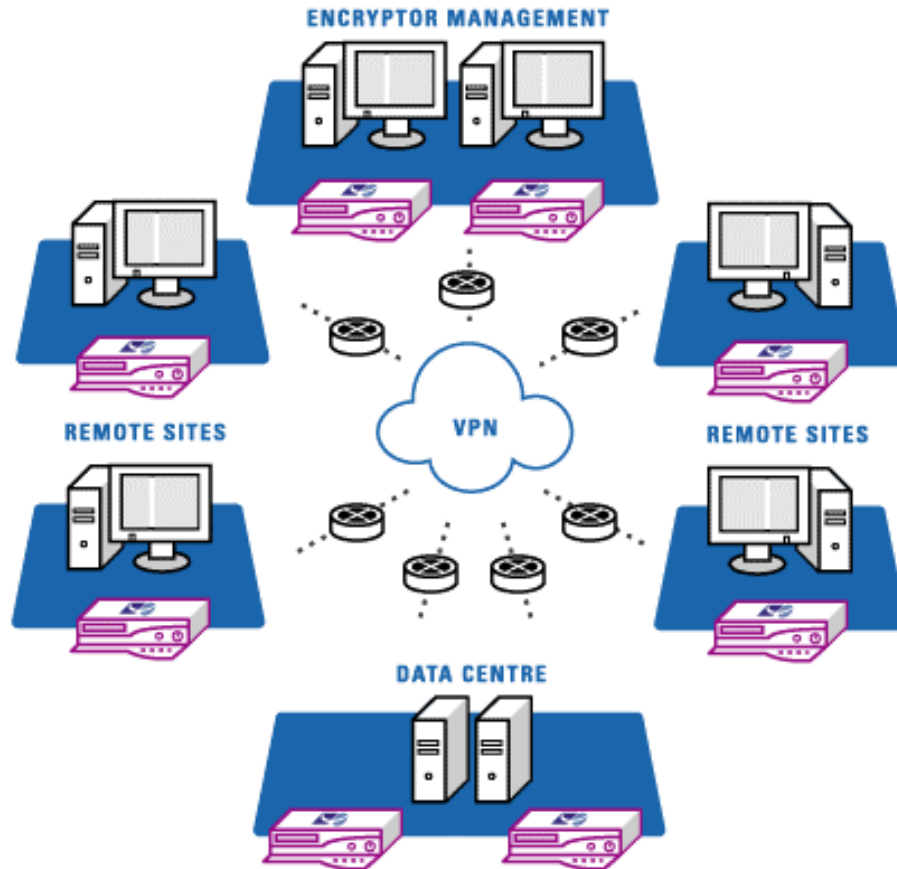
---

- High security product targeted at Public Sector SBU and high value Finance industry solutions
- 
- Purpose-designed to meet stringent Government security standards
- 
- Purpose-designed to meet Managed Service Providers' requirements
- 
- Network integration and central management functionality designed to minimise implementation and running costs





# AEP SureWare Net VPN Encryption



## Network Security Gateway Encryption

- Fully Managed IP encryption
- Full PKI Key Management
- Separate Network Management
- IPSEC ESP Tunnelling
- Ethernet Full Wire Rate Performance

# Key Features

- **Key Management**
  - On-Line CA
  - Encryptor generated Public/Private key pairs
  - Encryptor generated traffic keys
- **Security Policy Implementation and Enforcement**
  - Certificates
  - Certificate Revocation
  - Encryption network configuration
  - Encryptor configuration
- **Algorithms can be updated**
- **Subnet Support**
  - Up to 10 sub-nets per encryptor
- **QoS enabled**
- **NAT, SNMP, DHCP**
  - Network protocol support

## Value Added Functionality:

- Independently assured defence against active network attacks
- Aggressive payload, trojan horse, spoofing, replay, man-in-the-middle
- Defence against availability attacks
- Resistant to swamping
- Control of end-user network access capability

## Formal Approvals:

- CAPS\*
- ITSEC E3
- DIPCOG\*\*
- Crypto kernel assessed to FIPS 140-1(4)
- EU Council of Ministers assessment
- European Commission assessment

\*UK Government Approval Scheme

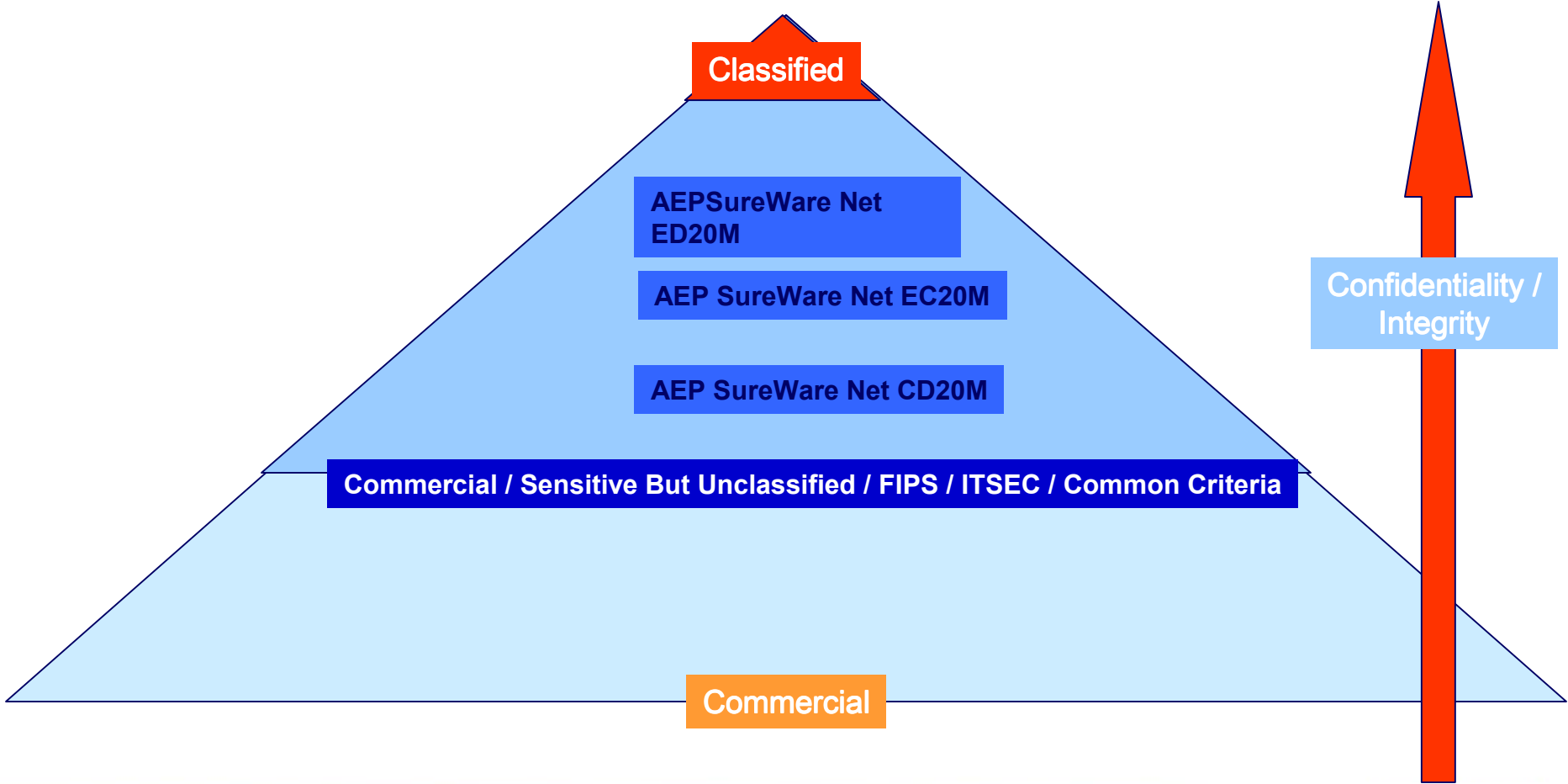
\*\*UK Ministry of Defence Approval Scheme

# AEP SureWare Net Users

---

- **Defence Departments**
- **Defence Industry**
- **National and International Government**
- **National and International Criminal Justice Agencies**
  
- **Reference sites:**
  - **2 UK National Criminal Justice Networks**
  - **Pan European Criminal Justice Network**
  - **Pan European Diplomatic Network**
  - **Pan European Government Infrastructure Network**

# The Security Pyramid



# AEP SureWare Net for the US Market

---

- **Established high-security encryption system designed and built in the United Kingdom**
- **Deployed on Classified and SBU systems in Europe**
- **New type of COTS Product**
- **Purpose built to meet government standards**
- **AEP Systems commitment to FIPS**
  - one of only 3 manufacturers to have a Level 4 certified product

# AEP SureWare A-Gate

---

- **Secure SSL VPN Appliance**

Next generation security appliance for secure remote access

- **Authenticated Access**

Provides secure and authenticated access between internal Web/RDP servers and Web browsers

- **Industry Protocols**

Encrypts communications using SSL

- **Simplified Usage**

Easier to use and set up than a traditional VPN

- **Flexible Deployment**

Supports more user access scenarios



# Save Time & Money

---

- **Simplifies usage & deployment of secure remote access**
  - Allows authorized out-of-office staff to connect to corporate resources securely from anywhere at anytime
  - Enables secure partner access with no impact or access requirements on partner systems
- **Reduces IT spend**
  - Reduces deployment time and management overhead typically associated with traditional VPNs
  - Negates floating laptop requirement for occasional travellers

# Benefits and ROI

---

- **Lower TCO than traditional IPsec VPN\***
  - 40% savings over IPsec VPN in year 1
  - 30% savings over IPsec VPN in subsequent years
- **Reduced hardware costs**
  - No need for floating laptops for occasional travelers
    - Typical SME would have 5-10 spares
  - Light users (e.g. e-mail only) can operate without laptops
- **Rapid Deployment**
  - Notify user of URL
  - Use existing enterprise authentication schemes
  - Avoid costs of retrofitting systems to support secure access



•Produced by the Yankee Group  
<http://www.yankeegroup.com>



# SureWare A-Gate as a PK Enabler

---

- Provides secure authenticated access to corporate resources from anywhere
- Minimal administration required to configure and deploy secure remote access
- Routine maintenance can be carried out remotely
- One-time cost. No further investment needed post-deployment
- Integrates with existing network and PKI systems
- Extend enterprise applications to employees, business partners and customers

# SureWare Runner

---

- **An SSL accelerator used to offload the processing of secure transactions from a server or appliance**
- **Why?**
  - Because SSL processing is CPU intensive
  - Servers providing SSL connections spend over 90% of their processor time handling cryptography (*source : RSA*)

# What Does AEP SureWare Runner do?

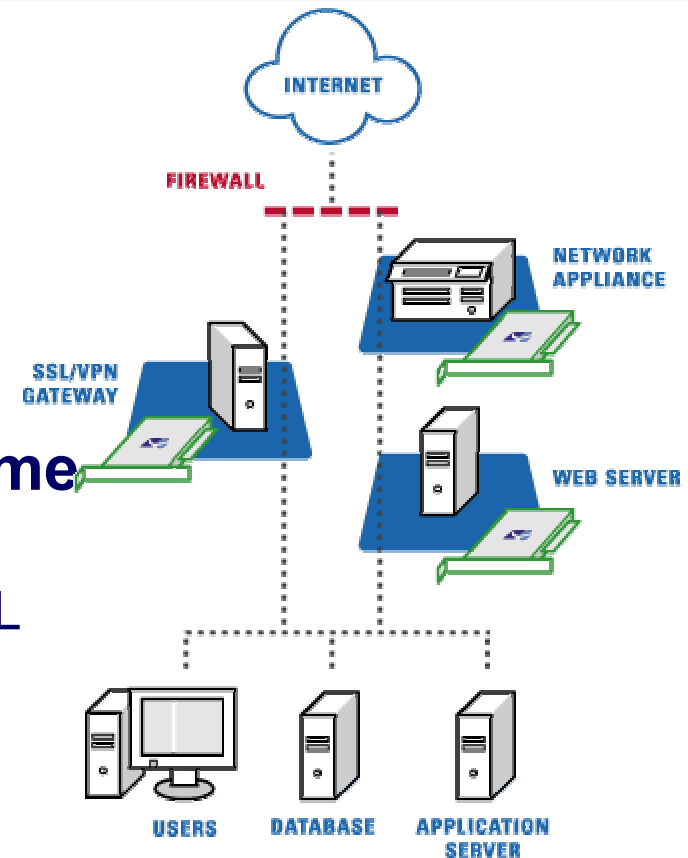
- **Reduces IT spend**

- Less servers needed to process SSL
- Smaller data center

- **Improves customer response time**

- Increases the processing time for SSL

- **Delivers more CPU resource to applications**



# Benefits

---

- **Easy-to-deploy**
- **Offers good price performance**
- **Extensive OS & API support**
- **Multiple form factors**
- **HP and Microsoft 'Designed for Windows' certified**

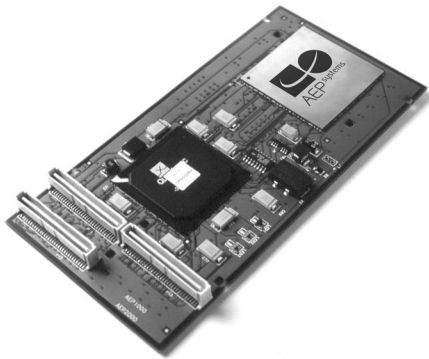
# Return on Investment

---

- **Reduces IT Spend**
  - Improved ROI from existing hardware
- **Alleviates server bottlenecks**
  - Better server response times
  - Better customer experience
- **Allows more applications to be delivered to the Web eg Microsoft .Net**
- **Plug & Play solution that is easy-to-deploy**
- **Extensive OS, API & form factors supported**

# Form Factors

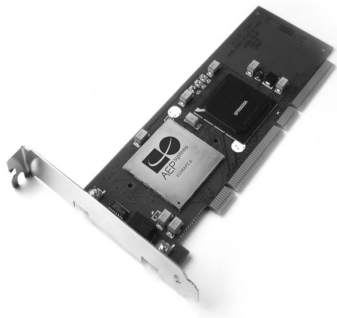
---



AEP SureWare Runner PMC



AEP SureWare Runner IDE



AEP SureWare Runner PCI



AEP SureWare Runner S1000

# AEP Systems

## Product & Technology Differentiators

---

- **Full hardware security product capability:**
  - Complete product design / development (hardware and software)
  - ASICs to appliances
  - Boards to high-security HSMs
- **High-speed, high-security products:**
  - SureWare Keyper speed up to 2000 TPS
  - SureWare Net at full wire rate
  - FIPS 140-1(2) Level 4 / ITSEC / CC capability
- **Secure appliances:**
  - Ability to deliver accredited appliances



[www.aepsystems.com](http://www.aepsystems.com)

## High-Speed Security Solutions