



**Sead Muftic**

**Integration of GSC/CAC Smart Cards  
and SETECS PKI**

SETECS Corporation  
E-mail: sead@dsv.su.se  
Tel: (301) 648-8599



**Presentation Overview :**



**1. The Concept of GSC/CAC Smart Card**

- 1.1 General aspects of smart card technologies
- 1.2 GSC and CAC smart card concept

**2. SETECS OneCARD**

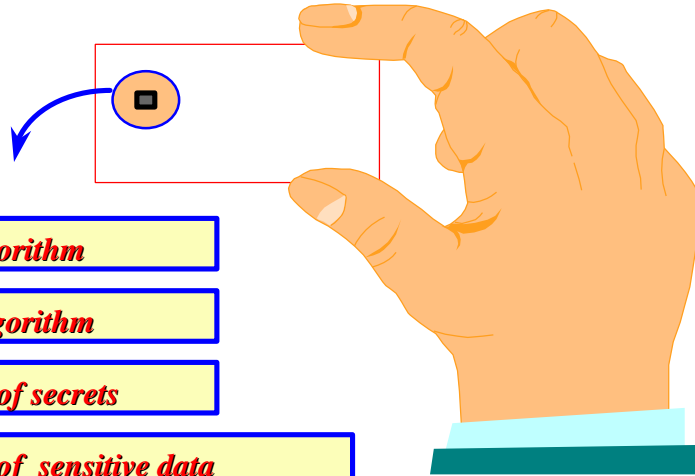
- 2.1 SC Middleware
- 2.2 Application Programming Interfaces (APIs)
- 2.3 Applets and methods

**3. Integration with SETECS PKI**

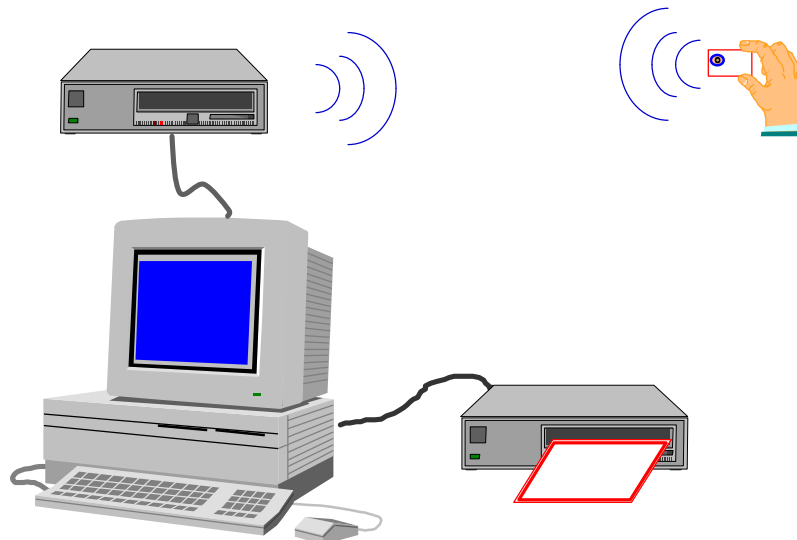
- 3.1 Card issuing procedure
- 3.2 User aspects – administration
- 3.3 User aspects – applications

**4. Future Development and Deployment**

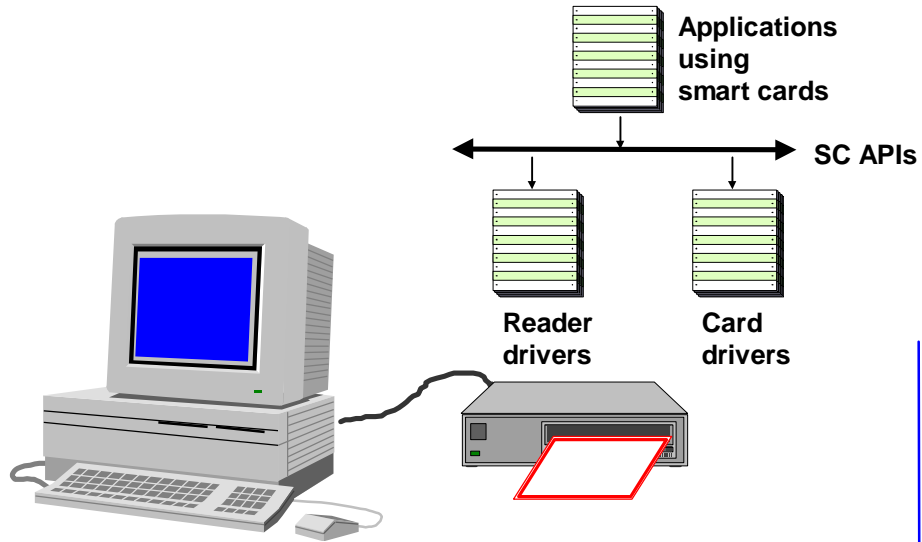
### Smart Card Technologies



### Contact Cards and Contactless Cards



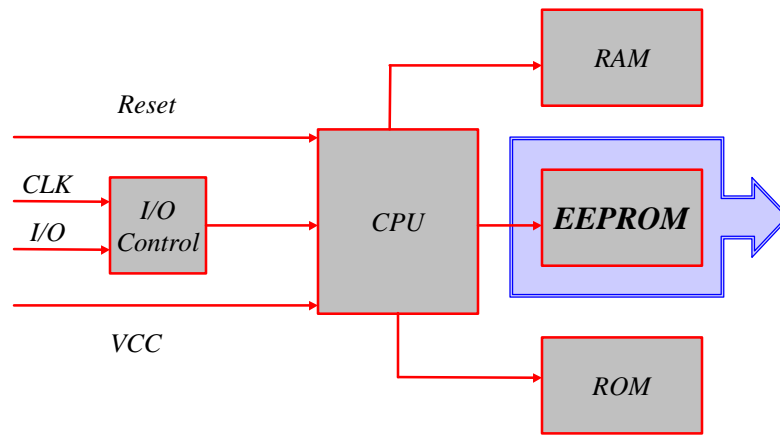
### Applications and Drivers



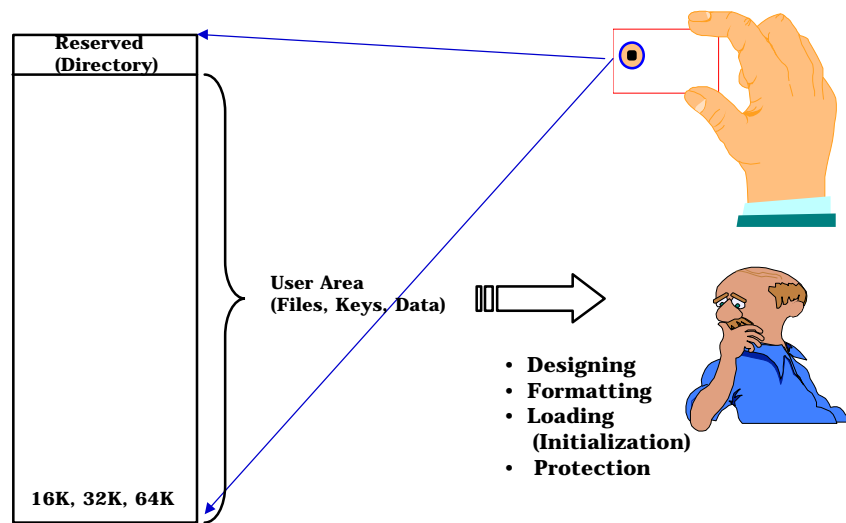
### Combination of Smart Cards and Biometrics



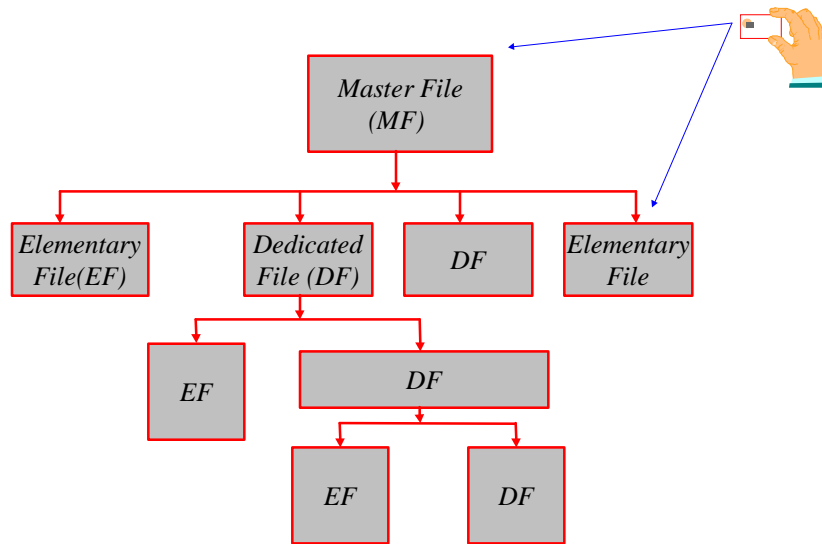
### Elements of the Smart Card Chip (ICC)



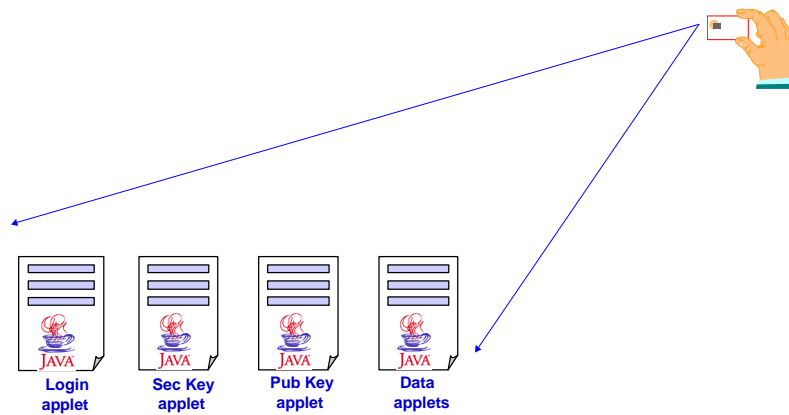
### Internal Structure of a Smart Card



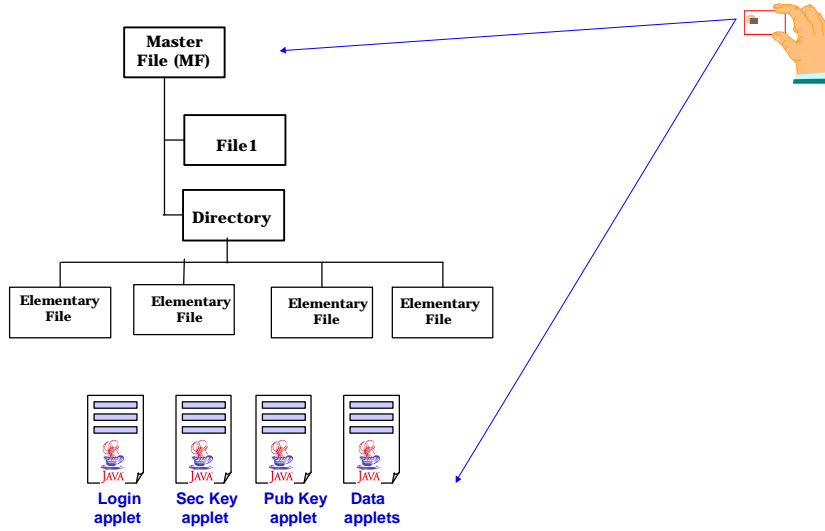
### File System Cards (ISO 7816 – 4)



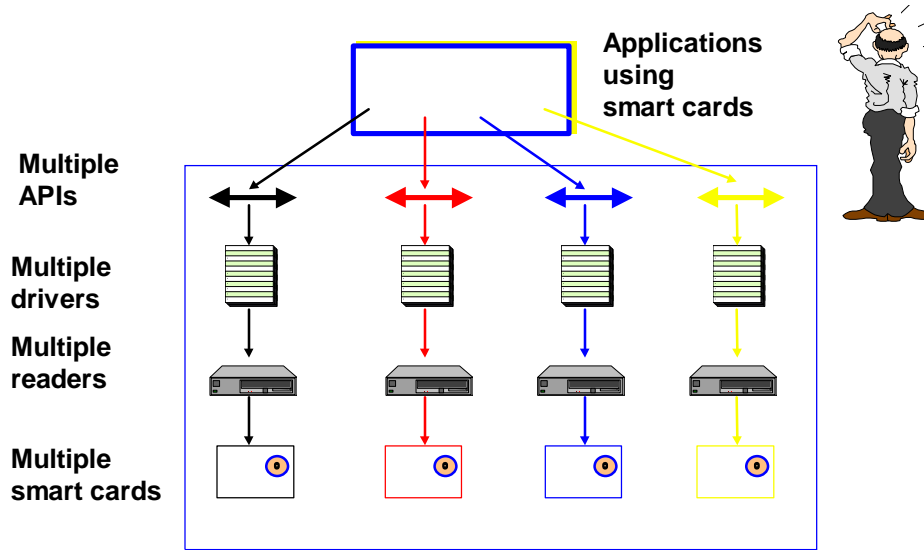
### Java Applet Cards (Javacard Framework)



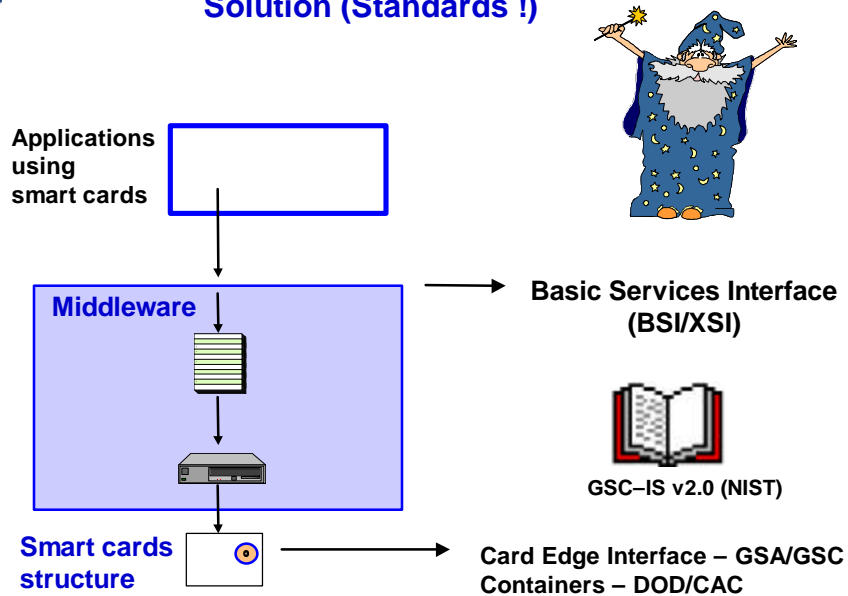
### Combined Cards (Files and Applets)



### Applications Development



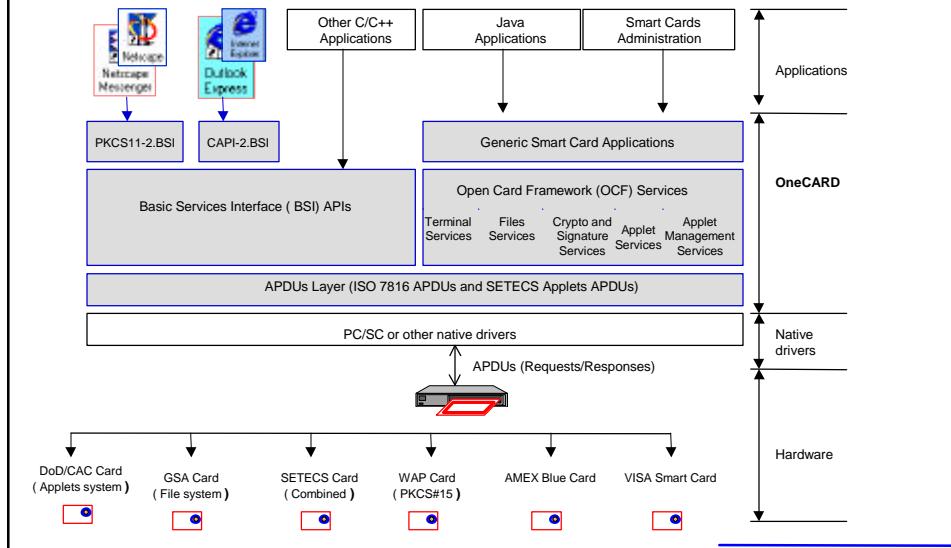
### Solution (Standards !)



### Presentation Overview :

1. **The Concept of GSC/CAC Smart Card**
  - 1.1 General aspects of smart card technologies
  - 1.2 GSC and CAC smart card concept
- ➔ 2. **SETECS OneCARD**
  - 2.1 SC Middleware
  - 2.2 Application Programming Interfaces (APIs)
  - 2.3 Applets and methods
3. **Integration with SETECS PKI**
  - 3.1 Card issuing procedure
  - 3.2 User aspects – administration
  - 3.3 User aspects – applications
4. **Future Development and Deployment**

## SETECS OneCARD – Middleware



## Application Programming Interfaces (BSI APIs)

### Utility Provider

```

gscBsiUtilAcquireContext()
gscBsiUtilCardConnect()
gscBsiUtilCardDisconnect()
gscBsiUtilGetACR()
gscBsiUtilGetBsiVersion()
gscBsiUtilGetCardProperties()
gscBsiUtilGetCardStatus()
gscBsiUtilGetExtendedErrorText()
gscBsiUtilGetReaderList()
gscBsiUtilPassthru()
gscBsiUtilReleaseContext()
    
```

### Generic Container Provider

```

gscBsiGcDataCreate()
gscBsiGcDataDelete()
gscBsiGcReadTagList()
gscBsiGcReadValue()
gscBsiGcUpdateValue()
    
```

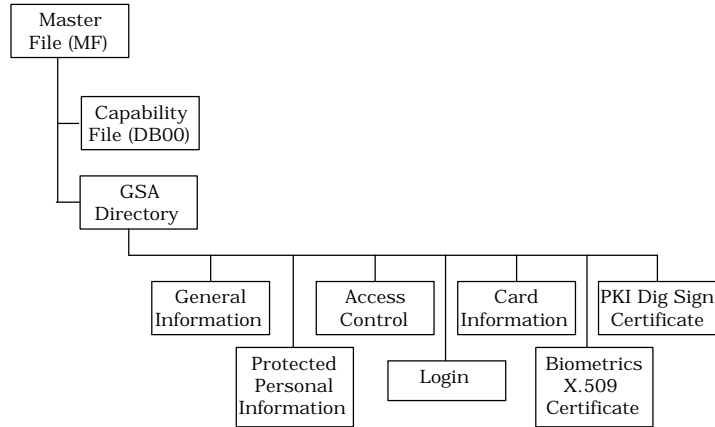
### Cryptographic Provider

```

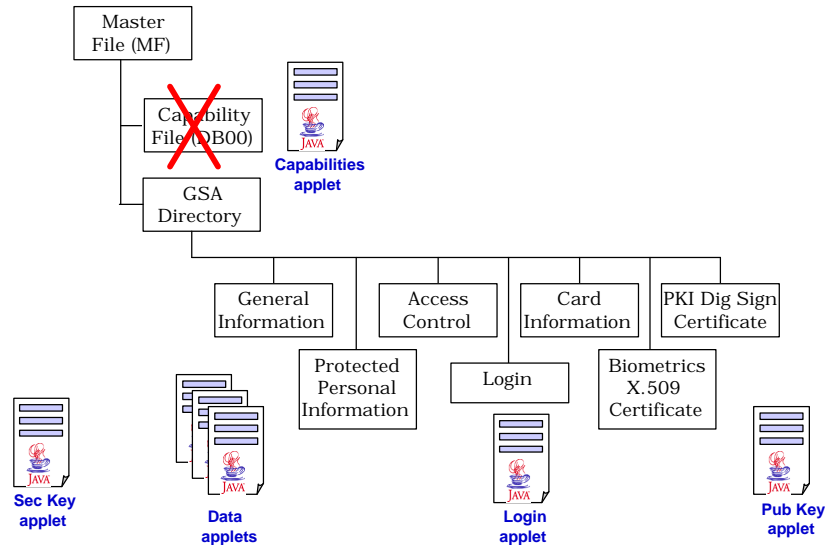
gscBsiGetChallenge()
gscBsiSkiInternalAuthenticate()
gscBsiPkiSign()
gscBsiPkiGetCertificate()
gscBsiGetCryptoProperties()
    
```



### GSC Files Card Layout



### “DOD/CAC Applets”



## SETECS OneCARD Services

<code>initialize_OneCARD_System</code>	<code>initialize_Card</code>
<code>select_readers</code>	<code>personalize_Card</code>
<code>connect_to_reader</code>	<code>write_Certificates</code>
<code>verify_Master_PIN</code>	<code>read_Certificates</code>
<code>get_ATR</code>	<code>display_Certificates</code>
<code>detect_OneCARD_version</code>	<code>certificate-based_Login</code>
<code>setUserPIN</code>	<code>export_Certificate</code>
<code>setUserUnBlockPIN</code>	<code>set_RSAKeyPair</code>
<code>setAdministratorPIN</code>	<code>test_RSA_applet</code>
<code>setAdministratorUnBlockPIN</code>	<code>set_SymmetricKey</code>
<code>verifyUserPIN</code>	<code>DES_Encrypt/DES_Decrypt</code>
<code>verifyAdministratorPIN</code>	<code>add_domain_login_info</code>
	<code>disconnect_reader</code>

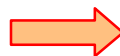
## Presentation Overview :

### 1. The Concept of GSC/CAC Smart Card

- 1.1 General aspects of smart card technologies
- 1.2 GSC and CAC smart card concept

### 2. SETECS OneCARD

- 2.1 SC Middleware
- 2.2 Application Programming Interfaces (APIs)
- 2.3 Applets and methods

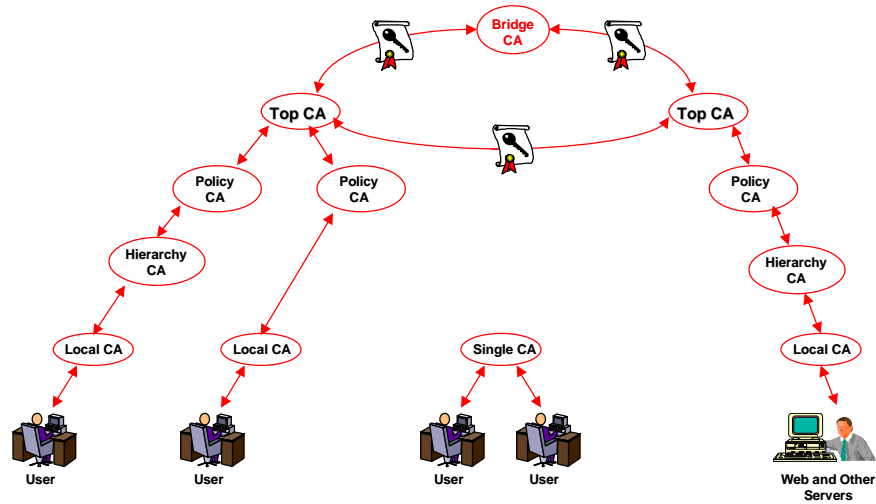


### 3. Integration with SETECS PKI

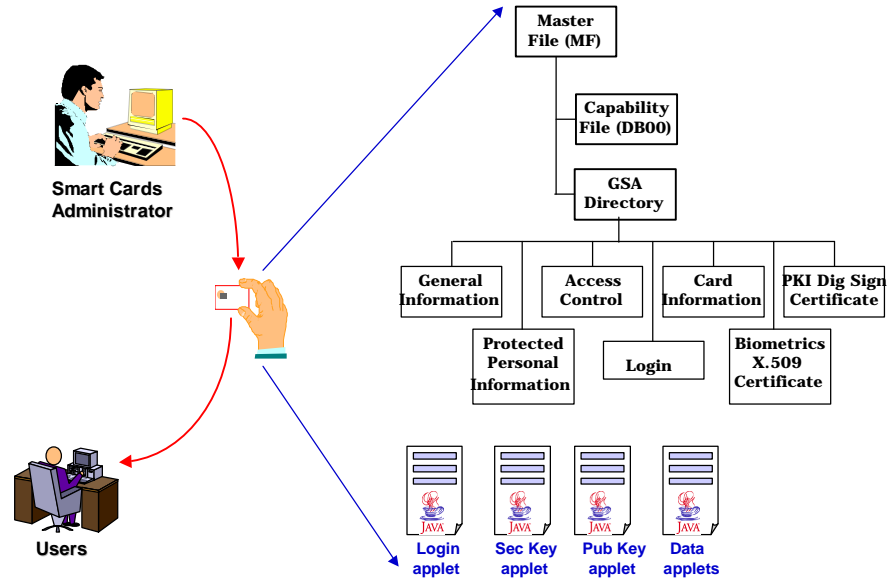
- 3.1 Card issuing procedure
- 3.2 User aspects – administration
- 3.3 User aspects – applications

### 4. Future Development and Deployment

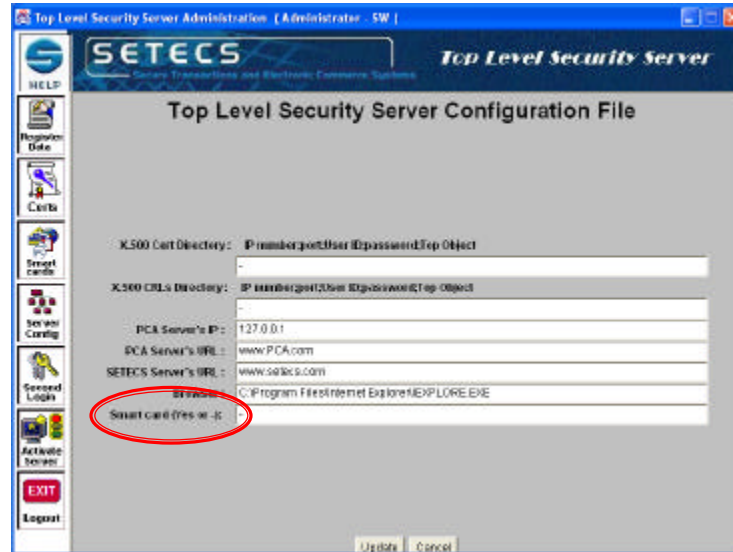
### SETECS One PKI – “Bridged” PKIs



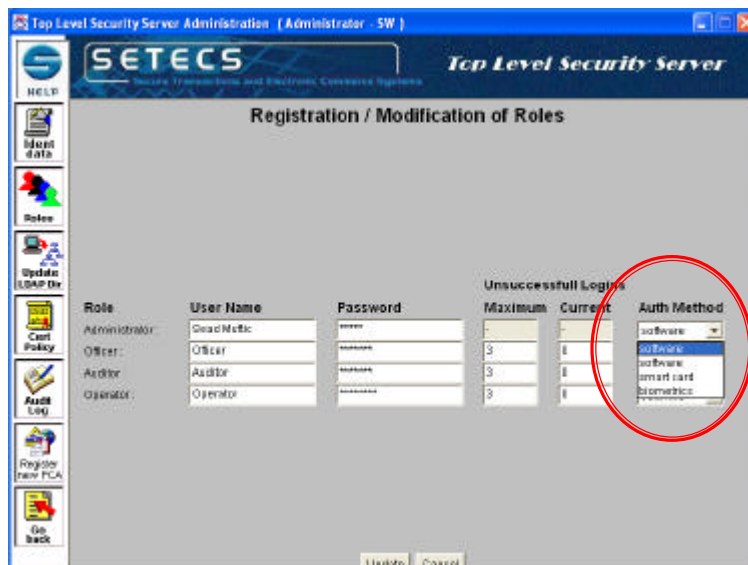
### Smart Cards Administration



### Integration with CA Servers



### Multiple CA Administrative Roles

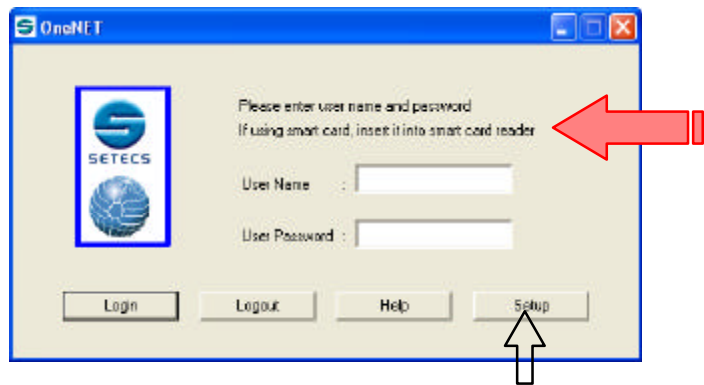




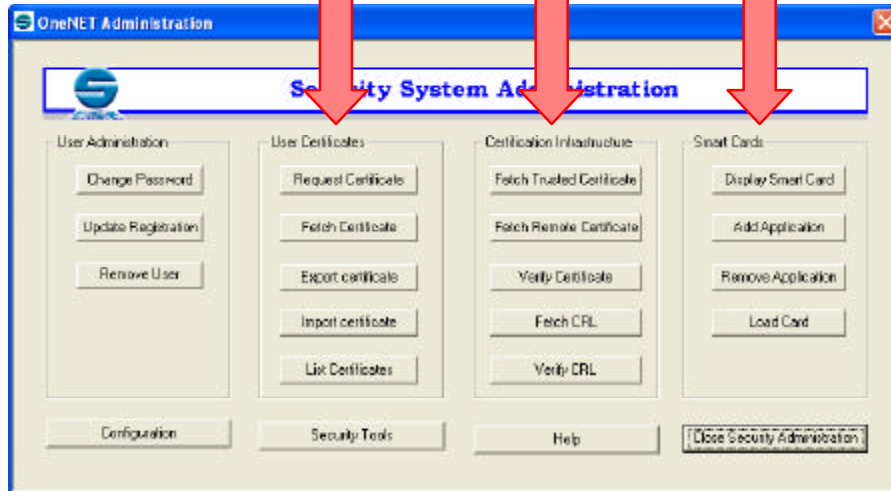
### Smart Cards Administration



### Smart Cards – User Login

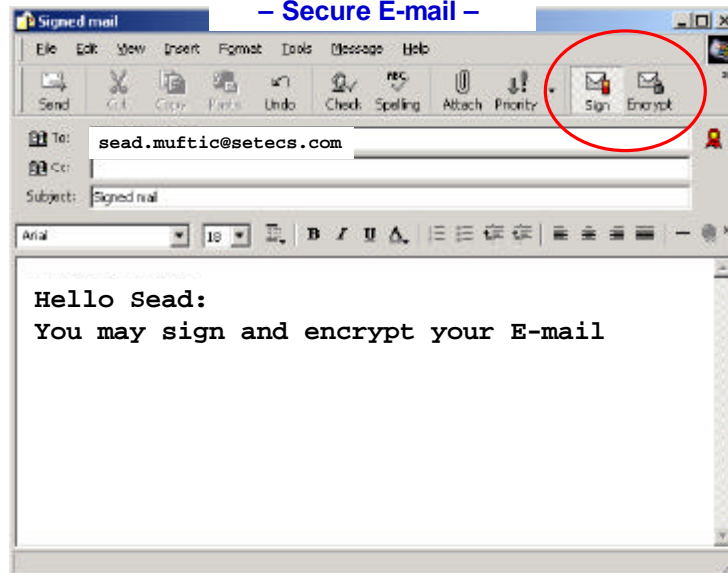


### Smart Cards – User Administration

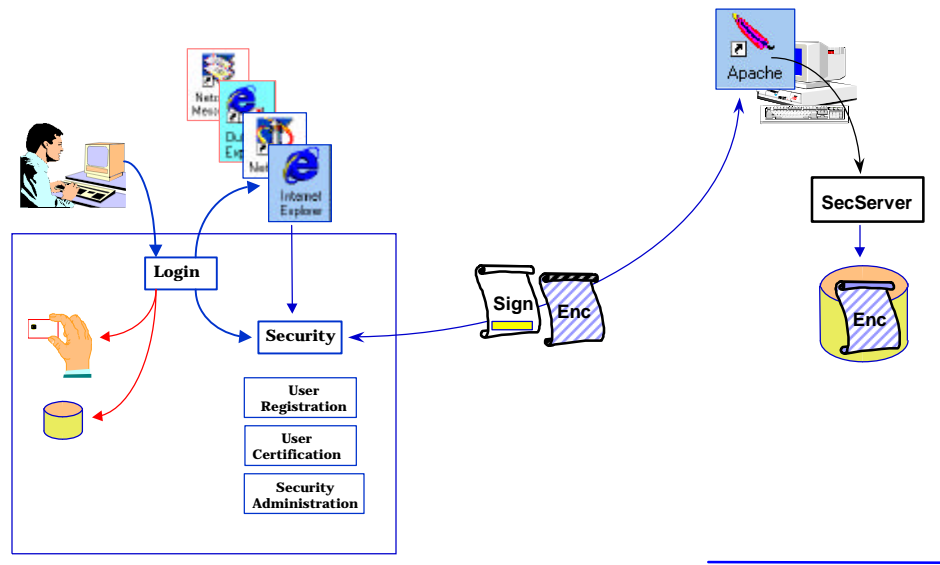


### Secure Applications

#### – Secure E-mail –



## Secure WWW (XML/HTML Documents)



## Presentation Overview :

### 1. The Concept of GSC/CAC Smart Card

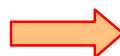
- 1.1 General aspects of smart card technologies
- 1.2 GSC and CAC smart card concept

### 2. SETECS OneCARD

- 2.1 SC Middleware
- 2.2 Application Programming Interfaces (APIs)
- 2.3 Applets and methods

### 3. Integration with SETECS PKI

- 3.1 Card issuing procedure
- 3.2 User aspects – administration
- 3.3 User aspects – applications



### 4. Future Development and Deployment



## Development

1. Upgrades to GSC-IS v 2.0
2. PKCS11-2-BSI and CAPI-2-BSI “glue”
3. Upgrades of the OCF layer
4. Integration with LDAP directories
5. Encryption key recovery (lost cards)
6. Card “roll-over”
7. Integration of SETECS OneCARD with SE Linux
8. Upgrades to new smart cards



## Deployment

1. Pilot PKI (administration of CA servers)
2. Pilot Secure E-mail / Secure Web
3. DoD “Big Bang” ( ? )
3. Other ...





**Sead Muftic**

**Integration of GSC/CAC Smart Cards  
and SETECS PKI**

SETECS Corporation  
E-mail: [sead@dsv.su.se](mailto:sead@dsv.su.se)  
Tel: (301) 648-8599